

## CORFU DONKEY RESCUE JOB SPECIFICATION – GENERAL WORKER

### THE SANCTUARY:

We are a registered Greek charity, open 365 days a year and is staffed throughout. Here at CDR we receive several thousand visitors every summer and have a small number of volunteers who assist with general duties.

### JOB DESCRIPTION/GENERAL DUTIES:

- Mucking out stables
- Cleaning and preparing tent/shelter
- Cleaning pens of small animals
- Raking yards
- Preparing animal food (donkeys/small animals)
- Exercising of dogs
- General maintenance of sanctuary including grounds, stock and equipment
- General care of donkeys including daily checks and grooming
- Performing and administering of medication & general first aid
- Assist in ensuring stock management is maintained
- Ensuring the safety of animals/staff/visitors at all times
- Showing visitors around and explaining the work we do
- This is not an exhaustive list and other duties may be required

### PERSON SPECIFICATION:

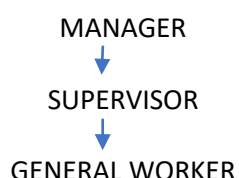
#### ESSENTIAL

- Ability to work as part of a team
- Ability to work alone
- Ability to manage time effectively
- Ability to work with animals
- Must be capable of hard physical work on a daily basis  
This job is not suitable for those with back problems, unable to lift heavy objects or those with mobility issues. It is an extremely demanding and physical role
- Own transport and driving license
- Good level of spoken and written English

#### DESIRABLE

- Knowledge of animal management/husbandry
- Basic level of educational qualifications

### LINE MANAGEMENT:



### CONTRACT HOURS:

8:30am – 5:30pm, 5 days per week on a rota basis.

30-minute break mid-morning and 1 hour for lunch.

A probationary period of 3 calendar months will be standard. During this period, you will be trained/supervised in carrying out the general duties.

On completion of probationary period a permanent job offer will be made to suitable candidates.

### Wages:

- €30 per day, paid weekly (equates to at least €600 per month)

#### Holiday entitlement:

- 4 weeks paid leave per year agreed by management in advance (no leave during winter season, April exc) and effective from completion of probationary period.
- Greek Bank holidays are not given as days off so you may be expected to work Easter, Christmas, New Year etc. if necessary.